

# Wi-Fi User Guide



The Wi-Fi Passman works with a *prepaid card* (available at the reception) or by *credit card*



## Configuration

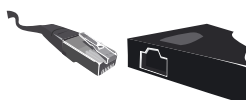
### -Your computer has an integrated Wi-Fi card

You can directly access to our Wi-Fi hot spot by following the below user manual.

### -Your computer has no integrated Wi-Fi card

Reception will provide you a Wi-Fi box that you can automatically parameter. It will be the link between your computer and the wireless network of your company. It is automatically installed and it gives you access to internet.

- Plug in the Wi-Fi box to your laptop Ethernet/Network bus and to the appropriate power (USB or mains-operated equipment).



## User guide

a/ Switch on your computer

b/ Open your browser

c/ A Wifipass connection strip will appear ----->

d/ 2 ways of paying:

- Enter your login and password that figures on the back of your prepaid card (available at the reception)
- Pay by credit card



## WARNING

The connection window must absolutely remain open in order to allow you to disconnect at anytime.

Although you can get it back by entering the following internet address:

<http://10.192.168.1:8080/session.asp>  
the time/credit you have will remain available for next time.

## Technical Guide

If you have any problem to connect your computer to Wi-Fi hotspot, please check the following points

1/ The wireless network SSID is "wifipass"

2/ Your network connection must be configured in DHCP (automatic connection to network properties)

3/ Desactivate your Proxy parameters

### \* Internet Explorer

- Open the « Tools » menu from the internet explorer window
- Select « Internet Options »
- Choose « Connection »
- Click on « network parameters »
- Uncheck « Use Proxy server as local network », and validate
- Close Internet Explorer and restart, the access strip to Wi-Fi will then appear.

### \* Netscape

- Open « Edition » in the Netscape window
- Select « Parameters »
- Choose « Advanced »
- Click on « Proxy »
- Uncheck « Manual » or « Proxy automatic configuration », and validate
- Close Netscape and restart, the access strip to Wi-Fi will then appear

### \* Opera

- Open the « File » menu in the Opera window
- Choose « Preferences »
- Choose « Network »
- Click on « Proxy Server »
- Uncheck Proxy parameters
- Close Opera and restart, the access strip to Wi-Fi will then appear

### \* Firefox

- Open the « Options/Preferences » menu in the Firefox window
- Select « General Options »
- Click on « Connection parameters »
- Select « Direct connecton to internet »
- Close Firefox and restart, the access strip to Wi-Fi will then appear

4/ Desactivate your Firewall (ie : for Windows XP - click on start - Control panel - Firewall Windows - Select « desactivate » and validate by clicking on « OK »)



For more  
informations,  
you can call the  
hotline  
# 0 899 700 169